



# SERVICE PARTS LIST

**BULLETIN NO.**  
54-02-0325

SPECIFY CATALOG NO. AND SERIAL NO. WHEN ORDERING PARTS		REVISED BULLETIN	DATE
<b>3 TON LEVER HOIST</b>			June '98
CATALOG NO. 9554, 9556, 9557	DATE CODE VG 9408	WIRING INSTRUCTION <b>NONE</b>	

EXAMPLE:  
Component Parts (Small #)  
Are Included When Ordering  
The Assembly (Large #).

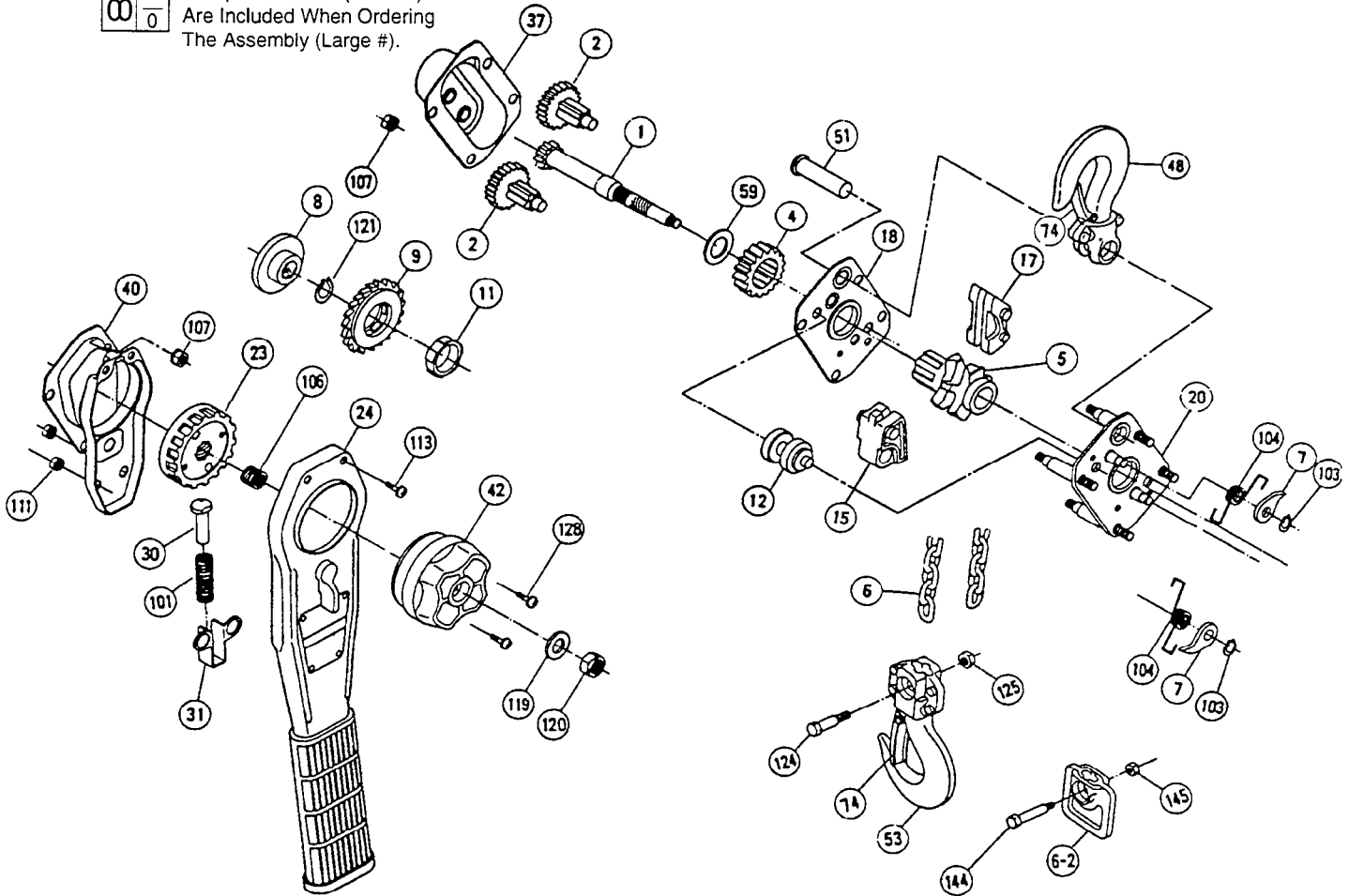


FIG.	PART NO.	DESCRIPTION OF PART	NO. REQ.
1	36-66-0030	Pinion Shaft	(1)
2	32-60-0050	Pinion with Pinion Gear	(2)
4	32-60-0060	Load Gear	(1)
5	45-11-0200	Load Sheave	(1)
6.2	45-52-0030	Stop Grip	(1)
7	44-55-0020	Pawl	(2)
8	43-78-0030	Disc Hub	(1)
9	45-94-0020	Ratchet Wheel	(1)
11	44-90-0320	Interlocking Ring	(1)
12	43-56-0530	Chain Guide	(1)
15	44-77-0030	Stripper	(1)
17	43-56-0540	Chain Guide	(1)
18	44-66-0080	Gear-Side Plate	(1)
20	44-66-0090	Handle-Side Plate	(1)
23	44-40-0075	Disc Nut	(1)
24	43-62-0115	Operating Handle	(1)
30	45-08-0020	Spring Shaft	(1)
31	42-20-0030	Shaft Base	(1)
37	42-92-1020	Gear Cover	(1)
40	42-92-1030	Ratchet Cover	(1)
42	43-62-0040	Guide Handle	(1)
48	43-74-0195	Top Hook Assembly	(1)
51	44-66-1430	Yoke Pin	(1)
53	43-74-0050	Bottom Hook Assembly	(1)
59	45-88-8650	Pinion Shaft Washer	(1)
74	44-20-0020	Safety Latch Assembly	(2)
101	40-50-0050	Change-Over Spring	(1)
103	44-90-0330	Snap Ring	(2)

FIG.	PART NO.	DESCRIPTION OF PART	NO. REQ.
104	40-50-0120	Pawl Spring	(2)
106	40-50-0130	Free-Wheeling Spring	(1)
107	44-40-0710	Spring Nut	(8)
111	44-40-0085	Spring Nut	(2)
113	45-88-8620	Screw & Spring Washer	(2)
119	45-88-8630	Flat Washer	(1)
120	44-40-0045	Lock Nut	(1)
121	44-90-0010	Snap Ring	(1)
124	42-32-0270	Chain Fastening Bolt	(1)
125	44-40-0720	Lock Nut	(1)
128	45-88-8640	Screw & Spring Washer	(2)
144	42-32-0280	Socket Bolt	(1)
145	44-40-0175	Lock Nut	(1)

FIG.	PART NO.	DESCRIPTION OF PART	NO. REQ.
<b>(For Catalog 9554 Only)</b>			
	12-40-0111	Nameplate	(1)
6	42-60-0085	3 Ton 5 Ft. Load Chain	(1)
<b>(For Catalog 9556 Only)</b>			
	12-40-0116	Nameplate	(1)
6	42-60-0095	3 Ton 10 Ft. Load Chain	(1)
<b>(For Catalog 9557 Only)</b>			
	12-40-0121	Nameplate	(1)
6	42-60-0105	3 Ton 20 Ft. Load Chain	(1)

**MILWAUKEE ELECTRIC TOOL CORPORATION**  
13135 W. Lisbon Road, Brookfield, WI 53005  
Drwg. 2